

CANADA'S

# style at home

Get  
Baking  
TIME-  
TESTED  
Holiday  
Treats

## MAKE YOUR HOME *Glow*

Gift  
Guide  
OUR  
65  
IDEAS

**CELEBRATE THE SEASON**  
5 Festive & Fabulous Table Settings



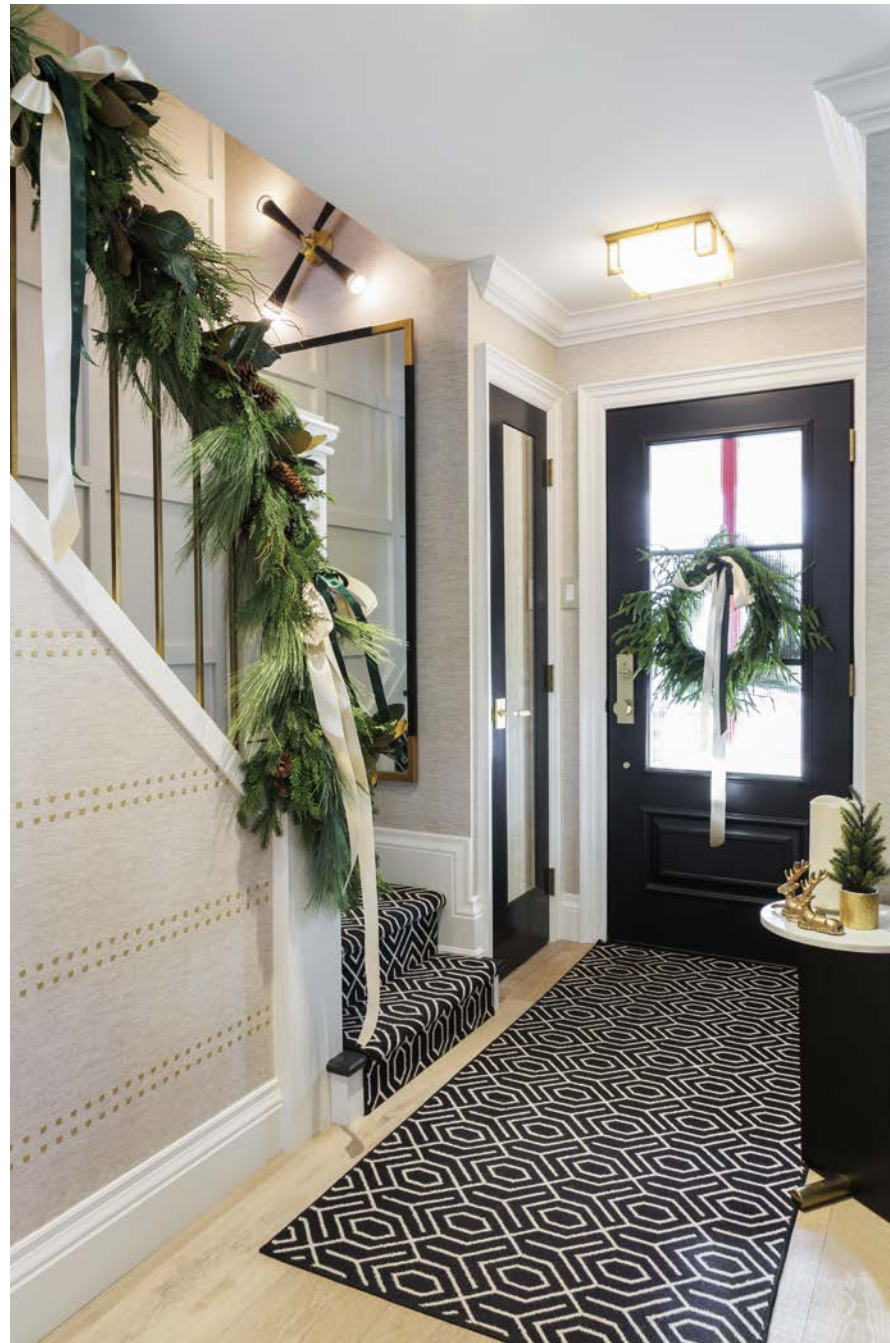
# The Season of MAKE-BELIEVE



## OUTSIDE & IN

The door is always open at designer Sarah St. Amand's classic 1950s home in Brantford, Ont. At Christmas, guests enter her merry-and-bright abode beneath a garland of fresh greenery. "It's a classic," says Sarah (shown above). Indoors, the look is traditional, but – secret revealed – that banister garland isn't real. Says Sarah: "My tip? Tie it with wide satin ribbon bows. It drapes so beautifully."

**DESIGN,** Sarah St. Amand Interior Design. **DOORMAT,** Annie Selke. **ENTRYWAY CARPET,** Bloomsburg Carpet.



Designer Sarah St. Amand isn't shy about combining faux greenery and artificial snow with the real thing to create holiday magic. **TEXT** BETHANY LYTTLE | **PHOTOGRAPHY** TAE PHOTOGRAPHY



## GOLDEN LIGHT

"It's like fallen snow inside a winter forest," says Sarah of the living room's flocked artificial Christmas tree. The timeless mantel display features two faux garlands twisted together for a fuller look. Paper accordion trees make for a wintry window-scape. On the coffee table, Sarah filled a glass vase with faux snow, then nestled a battery-operated pillar candle inside for a soft glow. The dining room houses another only-looks-real Christmas tree and a golden bar cart set with snowy forests under cloches.

**SECTIONAL,** Gresham House. **CHAIRS, RUG,** Sarah St. Amand Interior Design. **COFFEE TABLE, DINING TABLE, RH.** **CHANDELIER,** Hudson Valley Lighting Group. **TREE, Rona.** **BAR CART,** HomeSense.

